

# Security Upgrade - TLS 1.2 Browser Compatibility Guide

Security upgrade, Online Inspire Web Portal ([www.online-inspire.gov.in](http://www.online-inspire.gov.in)) will no longer support devices with versions older than TLS 1.2 encryption protocol. The portal will work on browsers with TLS 1.2 compatible. If you see an empty screen, kindly check the trouble shooting guidelines or update the browsers if it doesn't support TLS 1.2.

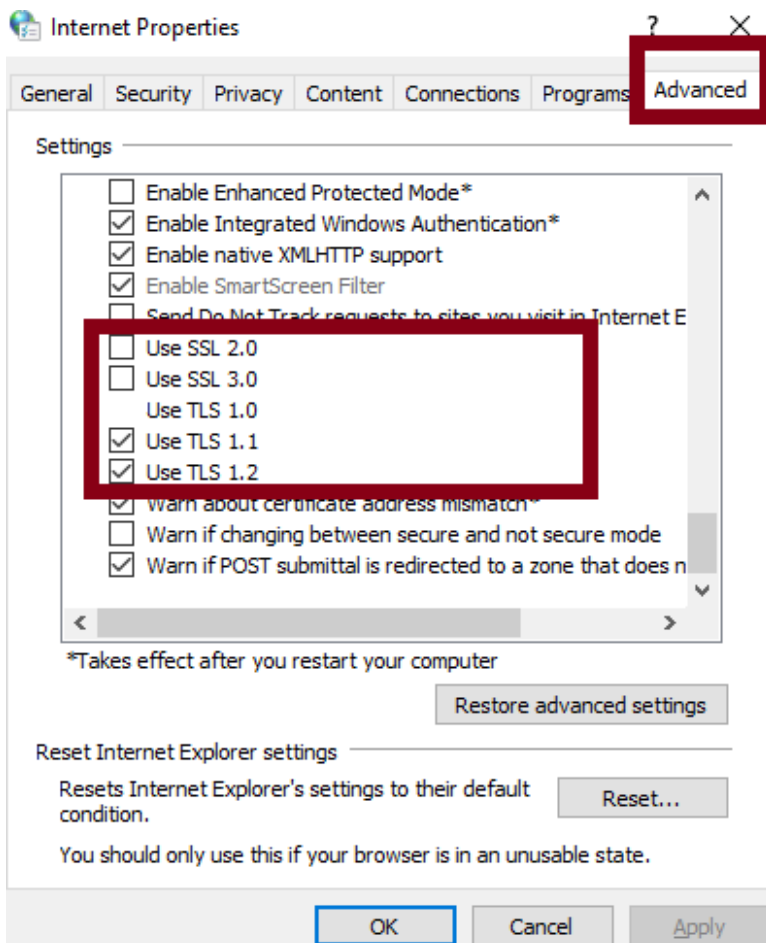
**Browser compatibility:** The TLS 1.2 is enabled by default on below browser versions.

1. Microsoft Internet Explorer – version 11 and onwards
2. Google Chrome – version 38 and onwards
3. Mozilla Firefox – version 27 and onwards
4. Apple Safari – version 7 and onwards

**Browser Trouble shooting:** (Check Browser Settings to continue Access to Inspire Web Portal)

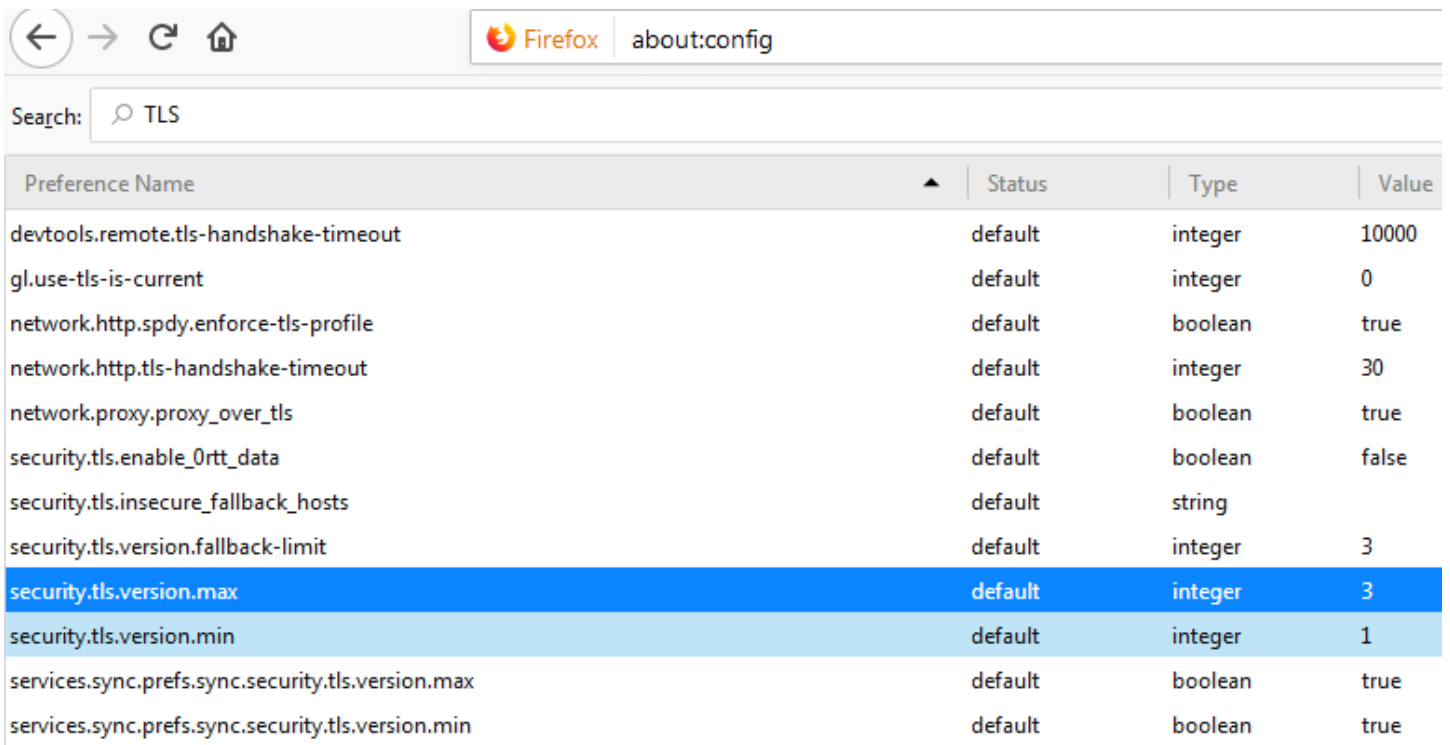
## Microsoft Internet Explorer:

1. Browse to Tools → Internet options → Advanced.
2. Under Security section, you will see a list of SSL and TLS protocols supported. Enable Use TLS 1.2 if present.



## Mozilla Firefox:

1. Enter “**about:config**” in the address bar
2. Search for TLS in the search bar
3. security.tls.version.max value should be 3 and security.tls.version.min value should be 1.

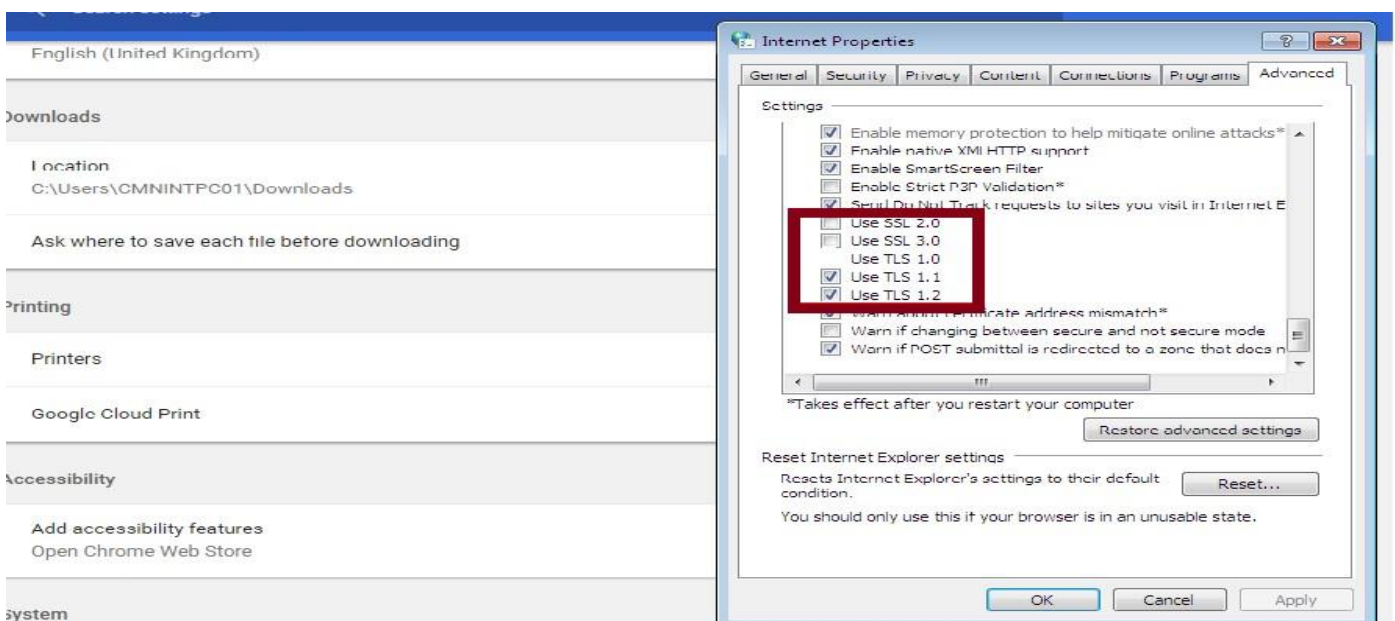


The screenshot shows the Firefox about:config page with a search bar containing "TLS". The search results are displayed in a table with the following columns: Preference Name, Status, Type, and Value.

Preference Name	Status	Type	Value
devtools.remote.tls-handshake-timeout	default	integer	10000
gl.use-tls-is-current	default	integer	0
network.http.spdy.enforce-tls-profile	default	boolean	true
network.http.tls-handshake-timeout	default	integer	30
network.proxy.proxy_over_tls	default	boolean	true
security.tls.enable_0rtt_data	default	boolean	false
security.tls.insecure_fallback_hosts	default	string	
security.tls.version.fallback-limit	default	integer	3
<b>security.tls.version.max</b>	default	integer	<b>3</b>
<b>security.tls.version.min</b>	default	integer	<b>1</b>
services.sync.prefs.sync.security.tls.version.max	default	boolean	true
services.sync.prefs.sync.security.tls.version.min	default	boolean	true

## Google Chrome:

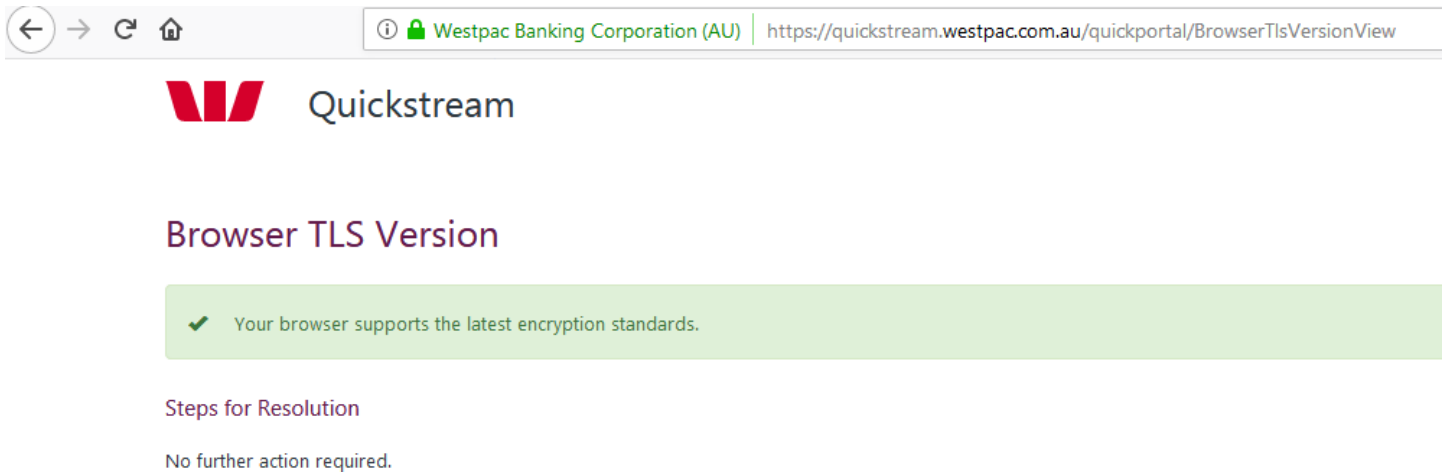
1. Click on **Alt + F** and select **Settings**
2. Scroll down and select **Advanced** settings
3. Click on **Open proxy settings**
4. Select **Advanced** tab. You will see a list of TLS protocols supported and need to select TLS 1.2.



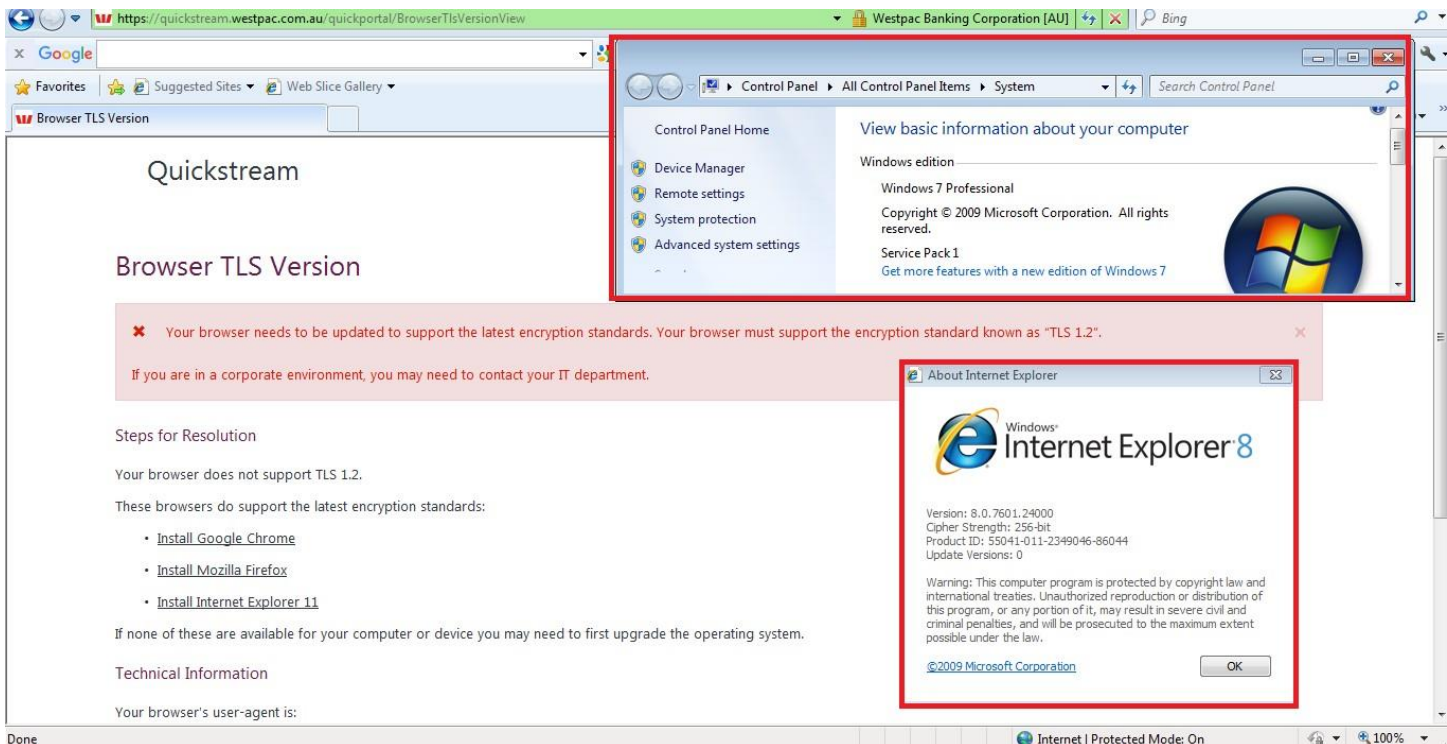
**Apple Safari:** There are no options for enabling TLS1.2 protocols. Safari version 7 or greater is supporting TLS 1.2 are automatically.

## Testing browser compatibility

Alternatively to test browser compatibility, you can visit the below URL: If browser supports TLSv1.2 you will see the following. <https://quickstream.westpac.com.au/quickportal/BrowserTlsVersionView>



If browser does not support TLSv1.2 you will receive the following message on Window 7/10 with IE 8.0 or below version.



When you receive an error, the page displays Steps for Resolution. Following these steps will help you change the settings in your browser, or upgrade to a newer version.

## Internet browser compatibility Guidelines

The following table lists the most common internet browsers. The table lists each browser with the compatibility of TLSv1.2 for recent versions.

### Microsoft Internet Explorer (IE)

Browser Version	TLS 1.2 Compatibility
Desktop and mobile IE version 11	Compatible by default
Desktop IE version 8, 9 and 10	Capable when run in Windows 7 or newer, but not by default. Windows Vista and older operating systems, such as Windows XP, are not compatible with TLS 1.2.
Desktop IE versions 8 and below	Not compatible or not stable with TLS 1.2 if OS version is Window vista, XP or lower.

### Mozilla Firefox

Browser Version	TLS 1.2 Compatibility
Firefox 27 and higher	Compatible by default
Firefox 23 to 26	Capable, but not by default.
Firefox 22 and below	Not compatible with TLS 1.2 or higher encryption.

### Google Chrome

Browser Version	TLS 1.2 Compatibility
Chrome 38 and higher	Compatible by default
Chrome 22 to 37	Capable when run in Windows Vista, or newer OS, OS X 10.6 or newer OS
Chrome 21 and below	Not compatible with TLS 1.2 protocol.

### Apple Safari

Browser/OS Version	TLS 1.2 Compatibility
Desktop Safari versions 7 and higher for OS X 10.9 and higher. Mobile Safari versions 5 and higher for iOS 5 and higher	Compatible by default
Desktop Safari versions 6 and below for OS X 10.8 and below. Mobile Safari for iOS 4 and below	Not compatible with TLS 1.2 protocol.

### Google Android OS Browser

Android OS version	TLS 1.2 Compatibility
Android 5.0 (Lollipop) and higher	Compatible by default
Android 4.4 (KitKat) to 4.4.4 and below	Not compatible with TLS 1.2 protocol.